



Min jista' jibbenefika minn dan iċ-Ċentru ta' Eċċellenza?

Kulhadd, speċjalment:

- Persuni li għandhom bżonn check-up tal-għajnejn
- Persuni li qegħdin iħossu sintomi relatati mal-vista tal-għajnejn

Kif nista' nagħmel appuntament?

Biex tagħmel appuntament tista' ċċempel lill-Call Centre tal-Primary HealthCare fuq **21231231**



Who can benefit from this Centre of Excellence?

Everyone, especially:

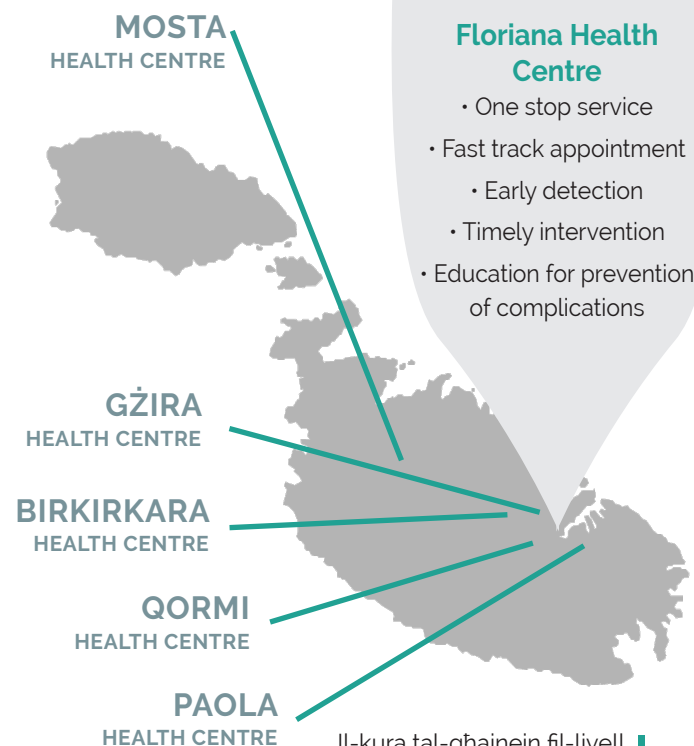
- Persons who request an eye check-up
- Persons experiencing symptoms related to eye sight

How to make an appointment?

To make an appointment you can phone the Primary HealthCare's Call Centre on **21231231**

The Centre of Excellence has a number of branches spread across the following Health Centres offering various levels of Primary Eye Care.

Iċ-Ċentru ta' Eċċellenza għandu numru ta' ferghat mifruxin maċ-Ċentri tas-Sahħa li joffru livelli varji ta' kura primarja fl' għajnejn kif gejj:



Il-kura tal-għajnejn fil-livell primarju hija l-pedament essenzjali għall-prevenzjoni u l-monitoraġġ fil-komunità. Dan iċ-Ċentru ta' Eċċellenza jipprovdri kura primarja holistika ta' kwalità għolja, immexxija mill-professionisti tagħna mharrġin f'dan il-qasam.



OFFICE OF THE DEPUTY PRIME MINISTER
MINISTRY FOR HEALTH



Primary eye care is the essential building block for prevention and monitoring of eye-related conditions in our community. This Centre of Excellence provides a high quality holistic service, run by our highly trained healthcare professionals.



B'konsistenza mal-fehma taghna li l-Kura Primarja hija holqa essenzjali mill-katina ta' servizzi mediċi li joffri l-Istat qeghdin inkomplu inwettqu fehmitna fil-prattika.

l-Ċentru ta' Eċċellenza għall-Kura tal-Għajnejn fiċ-Ċentru tas-Saħha tal-Floriana bil-frieghi tiegħu fiċ-Ċentri tas-Saħha tal-Mosta, Gżira, Birkirkara, Hal Qormi u Raħal Ġdid, qed joffri servizz liċ-ċittadin fil-qasam tal-kura tal-għajnejn bil-għan mhux biss ta' kura imma aktar u aktar ta' prevenzjoni.

Nistieden lil kulhadd jagħmel użu minn dan is-servizz ta' kwalità u professjonalità li bħal kull servizz mediku iehor qieghed ikun offrut liċ-ċittadin minghajr ebda ħlas.

Chris Fearn
Deputat Prim Ministru u Ministru għas-Saħha

In line with our philosophy to continue to place the Primary HealthCare at the centre of our health services, it is my pleasure to inaugurate this Centre of Excellence, thereby showing our continued commitment towards this goal.

The Primary Eye Screening Centre of Excellence together with its branches in Mosta, Gzira, Birkirkara, Qormi and Paola Health Centres, offers our community a holistic eye care screening service which also targets prevention and monitoring of eye related conditions.

I encourage you to make use of this free professional service

Chris Fearn
Deputy Prime Minister and Minister for Health

X'irrid inġib miegħi dakinhar? What do I need to bring with me on the day?

Il-Karta tal-Identità, il-Liċenzja tas-Sewqan jew il-Passaport
ID card, Driving License or Passport

Biljett ta' Referenza, jekk irreferut mit-tabib tiegħek
Referral ticket, if referred by your doctor

Riċetta Medika tal-għajnejn, fejn japplika
Eyeglass prescription, if available

Il-Karta r-Roża jew is-Safra
A pink (Schedule II) or yellow (Schedule V) form

Jekk jogħġbok kun fil-ħin għall-appuntament u ċempel fuq 2123 1231 jekk ma tkunx se tattendi

Please be on time for your appointment and call us on 2123 1231 if you need to cancel

SERVIZZI



Screening tal-għajnejn

One-stop-service għall-bżonnijiet kollha tal-screening primarju tal-għajnejn

Klinika tar-Refraktion

Il-vista tiegħek tiġi iċċekjata minn Optometrist li jista' jagħmillek riċetta għan-nuċċali f'kaz ta' bżonn.

Screening għall-Glaucoma

L-għan ta' dan is-servizz hu li naqdbu każijiet tal-glaucoma fi stadju bikri u b'hekk niproteġu l-kwalità tal-ħajja.

Klinika tal-Glaucoma

Dan is-servizz imhejji għal individwi li diġà għandhom il-glaucoma, fejn noffru monitoraġġ perġodiku tal-għajnejn.

Klinika tad-Diabetic Retinopathy

Dan is-servizz, iddisinjat speċifikament għal pazjenti dijabetiċi, huwa parti minn pjan ħolistiku għad-dijanjozi bikrija ta' komplikazzjonijiet relatati mad-dijabete

SERVICES



Eye Screening

A one-stop-service for all primary eye screening needs.

Refraction Clinic

An optometrist will check your eyesight and may prescribe sight-glasses if indicated.

Glaucoma Screening

To detect glaucoma at an early stage, preserving the quality of life.

Glaucoma Clinic

This service runs specifically for individuals already diagnosed with glaucoma and offers periodical eye monitoring.

Diabetic Retinopathy Clinic

This service is specifically designed for diabetic patients and is part of a holistic approach for the early detection of diabetes-related complications.